



# TCC-SWRI Transmission Project Recommended Route

CPS Energy Board of Trustees Presentation

March 28, 2011

Presenter:

Don Stanton

Manager, Project Management

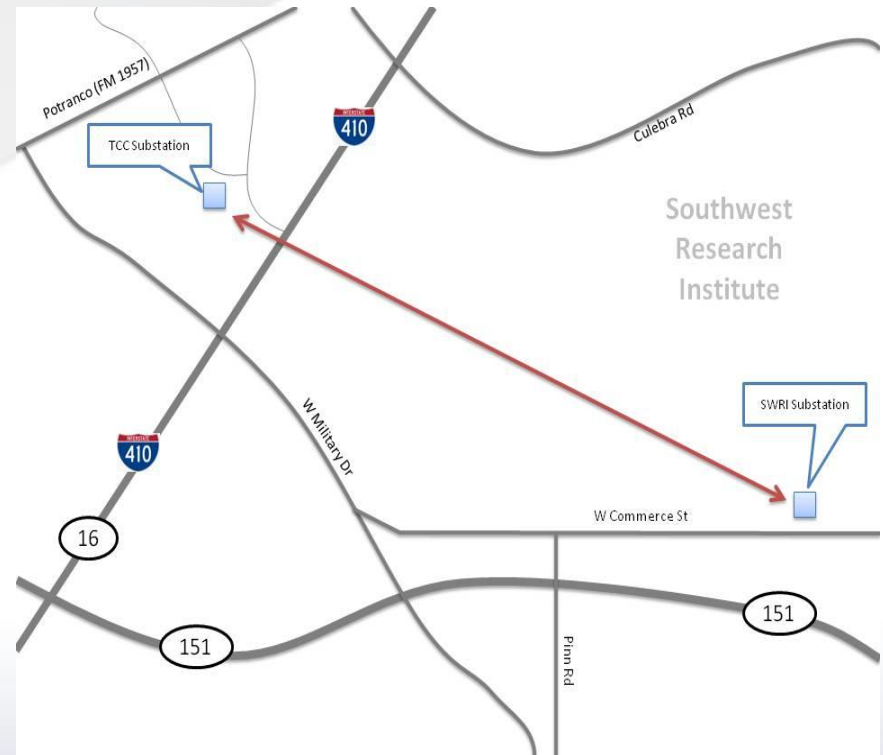


# Agenda

- Project Scope and Need
- Routing and Siting Process
- Recommended Route
- Next Steps
- Questions

# Scope of the Project

- Construct a new 138 kV transmission line connecting the Southwest Research Substation (SWRI) to the TCC Substation.
- Install 138 kV line terminal at the TCC Substation.





# Need For Project

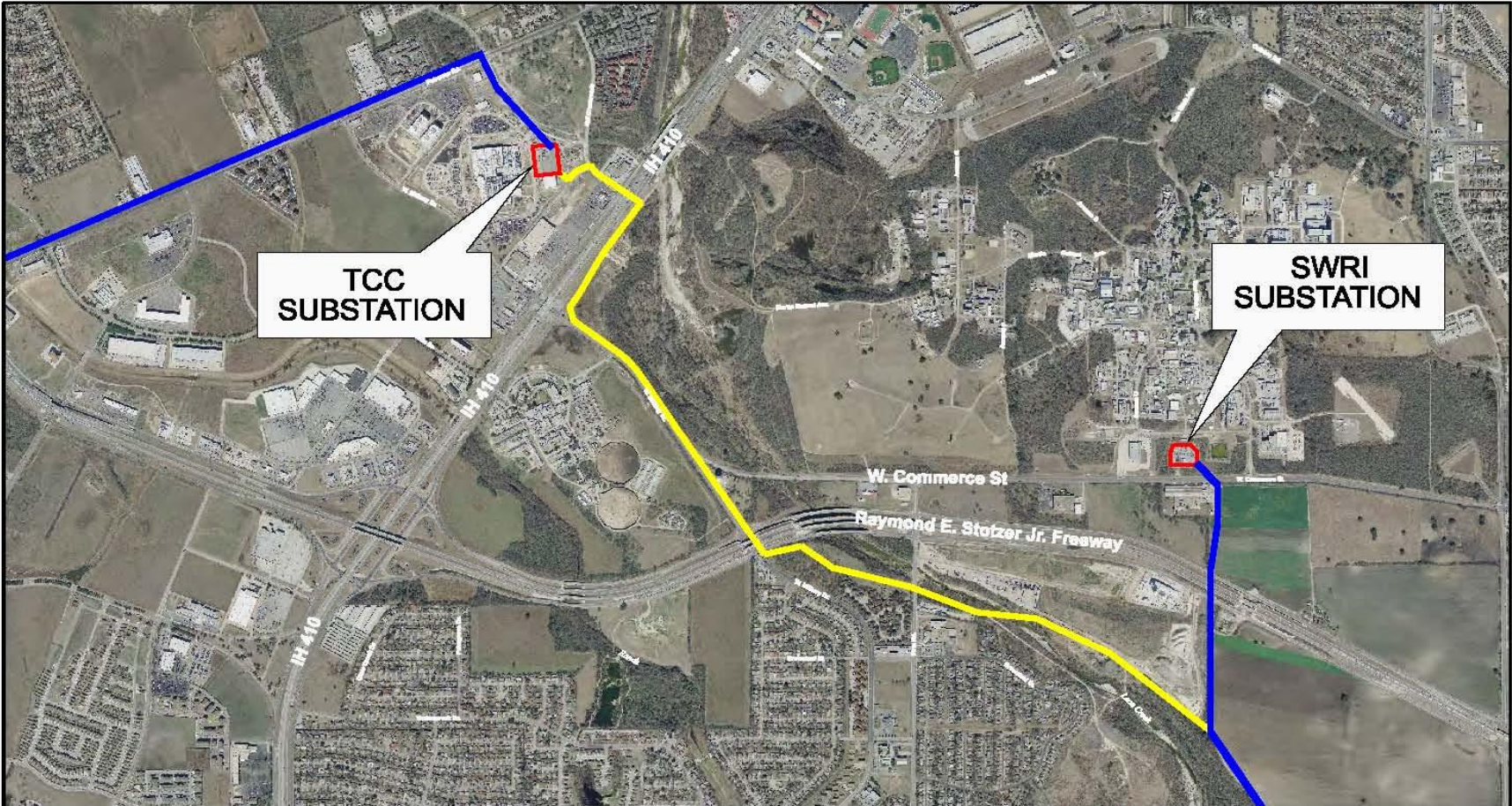
- The western portion of the CPS Energy service area is experiencing dramatic growth resulting in increased demand for electricity in this area.
- Provides increased transmission system capacity and an additional transmission source to maintain reliable service to the area.
- The new line is needed by June 2012 to maintain electrical reliability.



# Public Involvement

- Information packets and invitations sent to property owners and interested parties October 29, 2010
- Citizen's Advisory Committee (CAC) presentation & input November 10, 2010
- CPS Energy hosted a public open house November 16, 2010 at John Jay High School, San Antonio, TX
- CAC Update March 9, 2011





**TCC  
SUBSTATION**

**SWRI  
SUBSTATION**



- Environmental
- Architecture
- Engineering
- Construction

-  CPS Energy's Recommended Route
-  Existing Transmission Line

**CPS ENERGY RECOMMENDED ROUTE  
TCC-SWRI TRANSMISSION PROJECT**



# Next Steps

- Present recommended route to Board  
March 28, 2011
- Public Input April 14, 2011 (location TBD)
- Board consideration April 25, 2011
- City Council Ordinance
- Transmission line in service June 2012



# Questions