



ETT Lytle-CPS Energy Lytle

Transmission Line Project

Presentation to the CPS Energy Board of Trustees

February 28, 2011

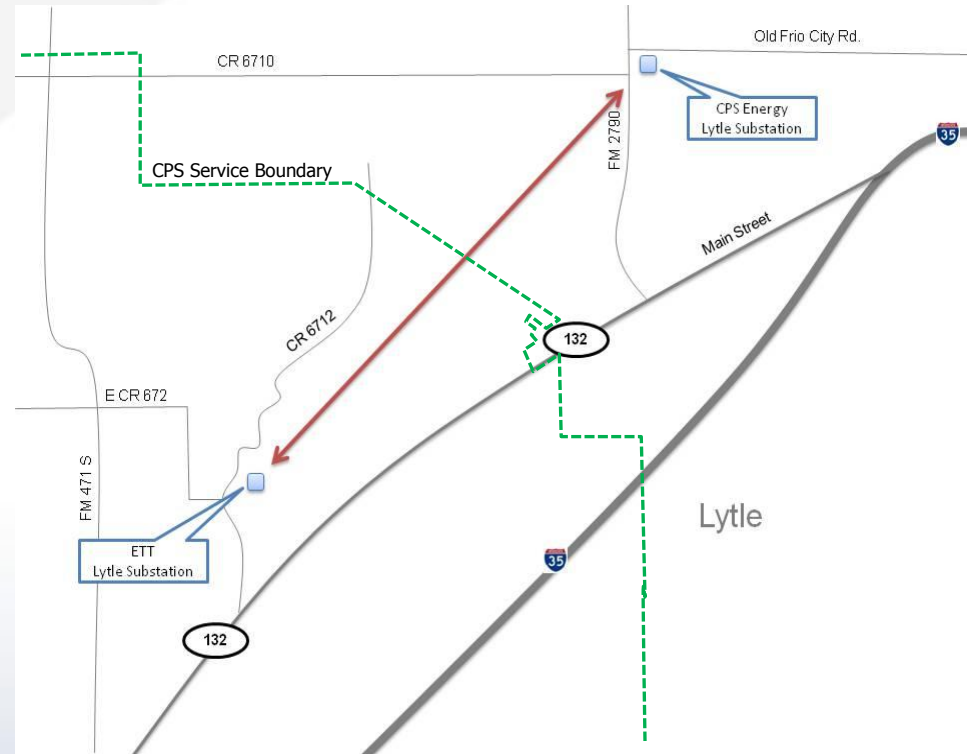
Presenter:

Don Stanton



Scope of the Project

This is a joint project between Electric Transmission Texas, LLC (ETT) and CPS Energy to construct a 138kV electric transmission line from ETT's Lytle substation to CPS Energy's Lytle substation.





Need For Project

- Recommended by ERCOT to support safety & reliability of ERCOT Region
- High load growth in ERCOT Region southwest of San Antonio
- Current transmission system is overstressed under contingency (unforeseen event)
- Improves power transfer from San Antonio
- Improves reliability by providing an additional path from San Antonio



Board Process

- ✓ **January 31, 2011**
 - Staff presentation of the Preferred Route
- ✓ **February 23, 2011**
 - Board hosted Public Input Meeting
- **February 28, 2011**
 - Consideration for approval of Preferred Route

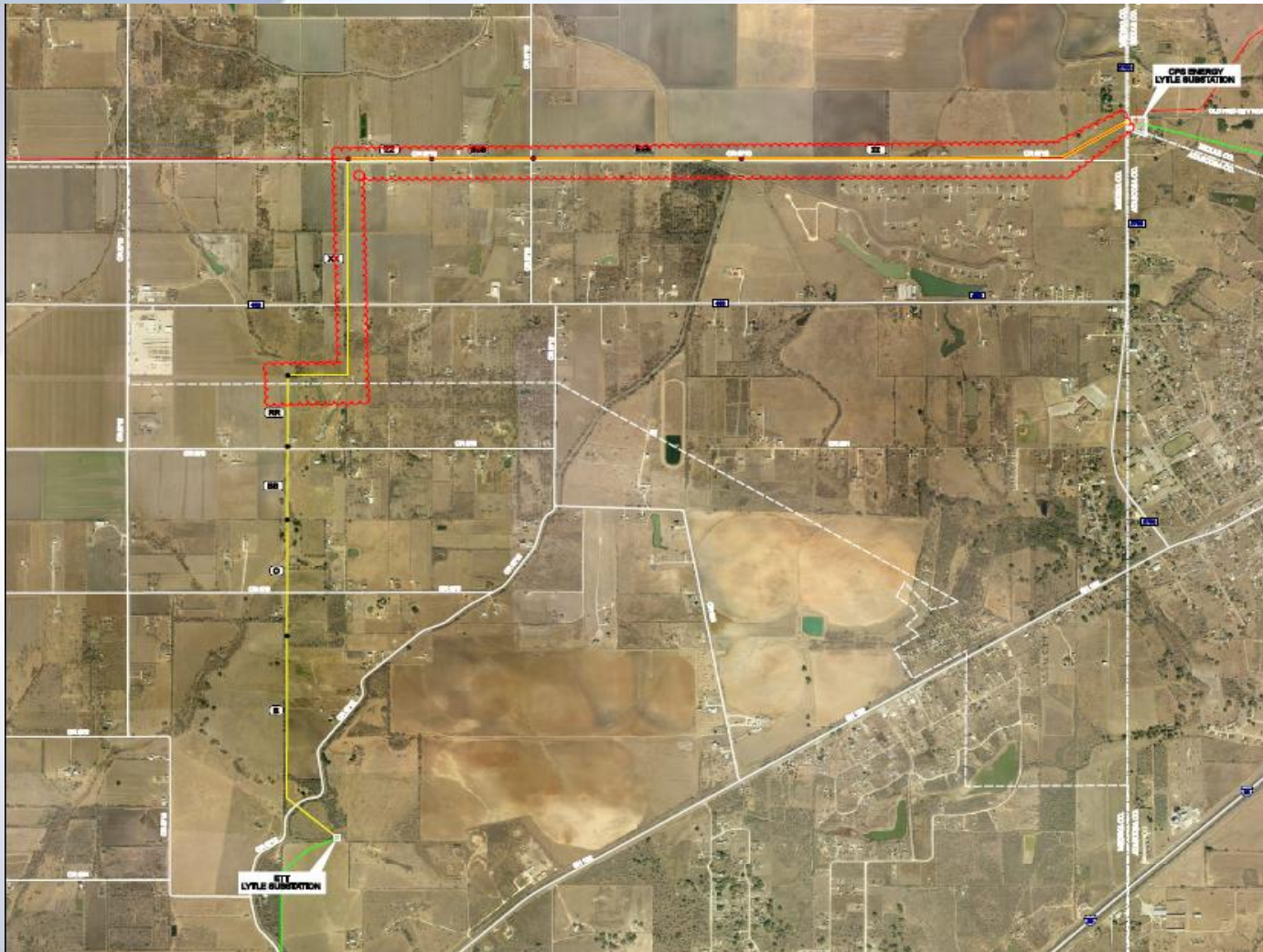


Public Input Meeting

- Electric and magnetic Fields (EMF)
- Citizens Advisory Committee (CAC) Involvement
- Public Utility Commission (PUC)
- Use of Existing Easements
- Aesthetics



Joint Recommended End-to-End Route



B - O - BB - RR - XX - ZZ - BBB - EEE - III



CPS Energy's Preferred Route-Segment Combination

RR - XX - ZZ - BBB - EEE - III



Request Approval of CPS Energy's Preferred Route