



ETT Lytle-CPS Energy Lytle Transmission Line Project

Presentation of Recommended Route to the CPS Energy Board of Trustees

January 31, 2011

Presenter:

Don Stanton

Manager, Project Management



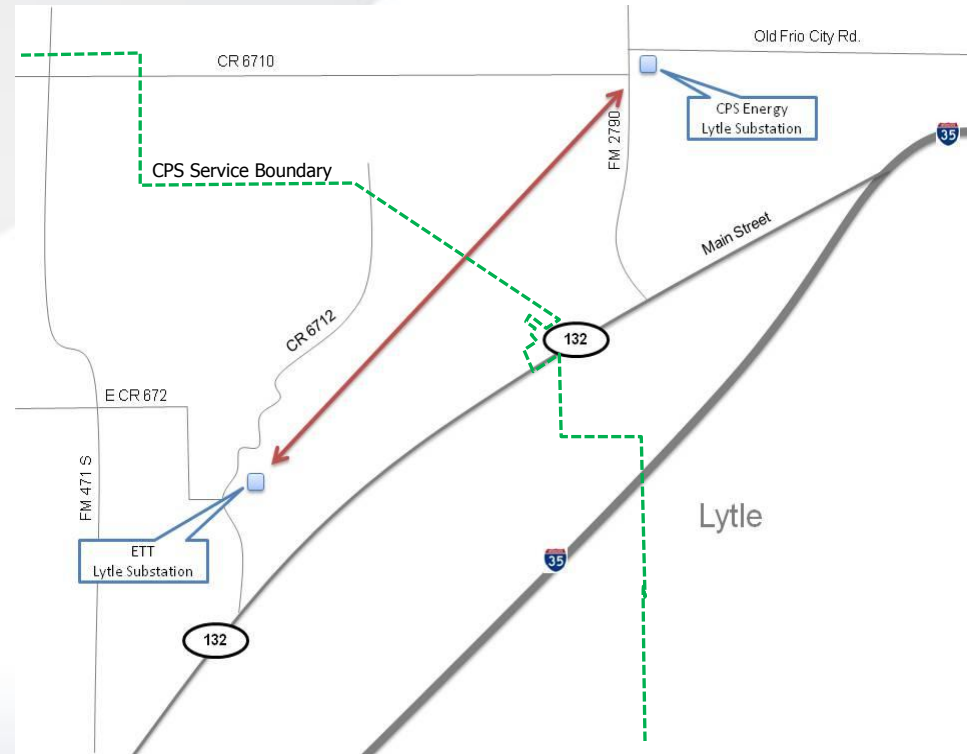
Agenda

- Project Scope & Need
- Routing/Siting Process
- Recommended Route
- Next Steps
- Questions



Scope of the Project

This is a joint project between Electric Transmission Texas, LLC (ETT) and CPS Energy to construct a 138kV electric transmission line from ETT's Lytle substation to CPS Energy's Lytle substation.





Need For Project

- Recommended by ERCOT to support safety & reliability of ERCOT Region
- High load growth in ERCOT Region southwest of San Antonio
- Current transmission system is overstressed under contingency (unforeseen event)
- Improves power transfer from San Antonio
- Improves reliability by providing an additional path from San Antonio



Public Involvement Program

- CAC Presentation & Input on September 8, 2010
- Information packets and invitations sent to property owners and officials on September 13, 2010
- CPS Energy and ETT hosted a joint public open house on September 28, 2010 at Lytle High School
- CAC Update on January 12, 2011





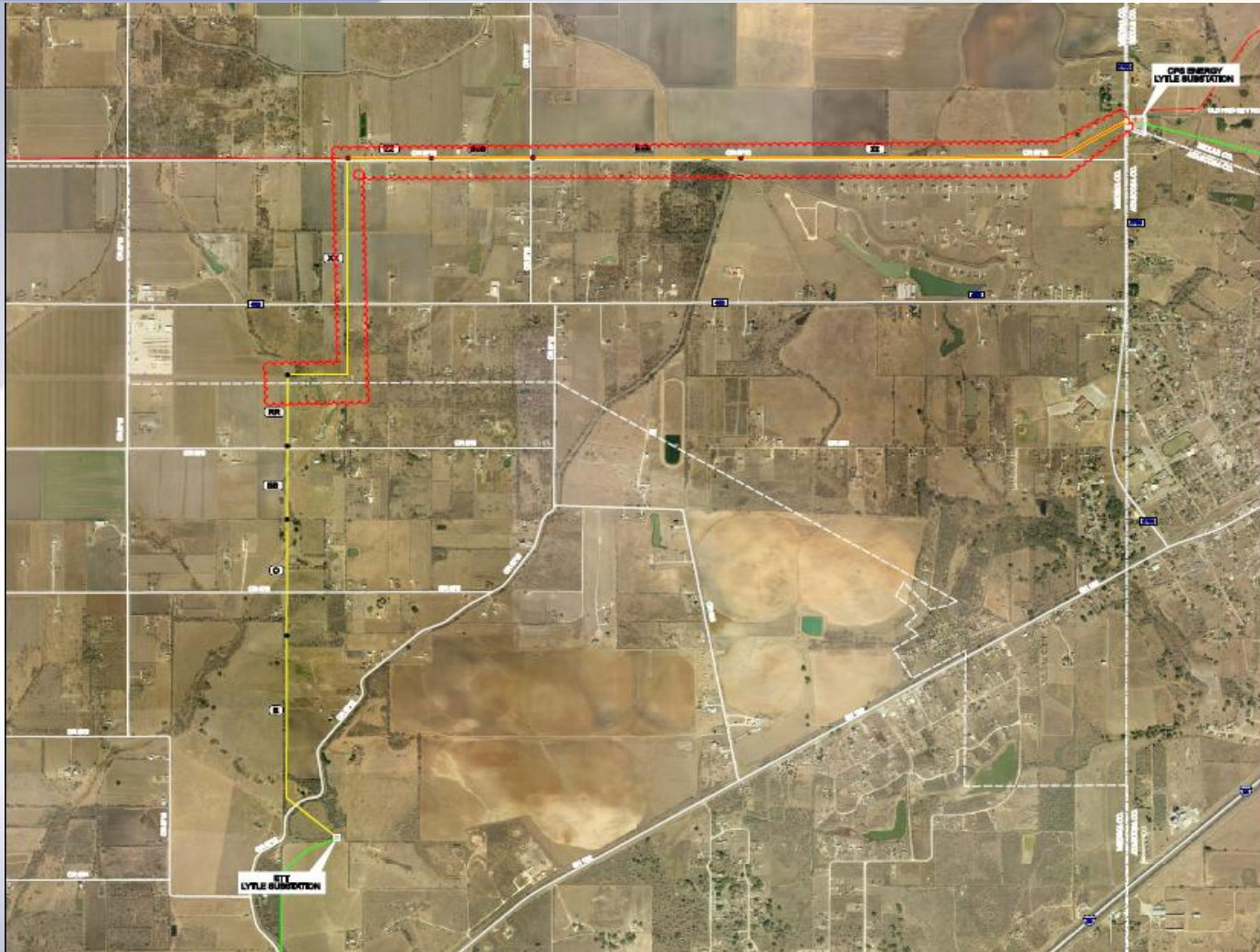
CPS Energy's Preferred Route-Segment Combination



RR-XX-ZZ-BBB-EEE-III



Recommended Joint Preferred Route



B - O - BB - RR - XX - ZZ - BBB - EEE - III



Next Steps

- ✓ Present preferred route to Board on January 31, 2011
- Public Input (if necessary) in February 2011
- Request Board Approval on February 28, 2011
- City Council ordinance
- ETT PUC Approval Process (up to 18 months)
- Transmission line in Service date April 2013



Questions